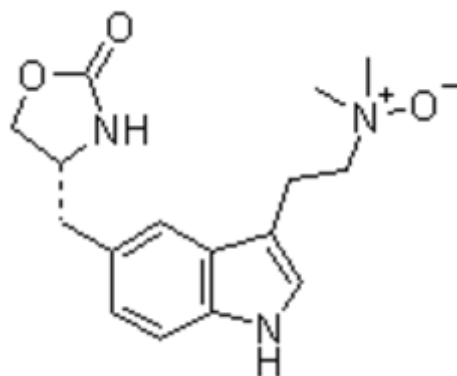


Zolmitriptan Related Compound E



Zolmitriptan Related Compound E

Synonyms : Zolmitriptan N-Oxide, Zolmitriptan Related Compound E

CAS No : 251451-30-6

Molecular Formula : C₁₆H₂₁N₃O₃

Molecular Weight : 303.36

Chemical Name : (4S)-4-[[3-[2-(Dimethyloxidoamino)ethyl]-1H-indol-5-yl]methyl-2-oxazolidinone

Sai Traders

FF-4, Limbani Complex, Nr. Gormoh Hotel, Iscon-Bopal Road, Ambli, Ahmedabad -380058, India.

Mobile : +91 9227808809 , +91 8866555288 , <http://saitraders.co.in>